

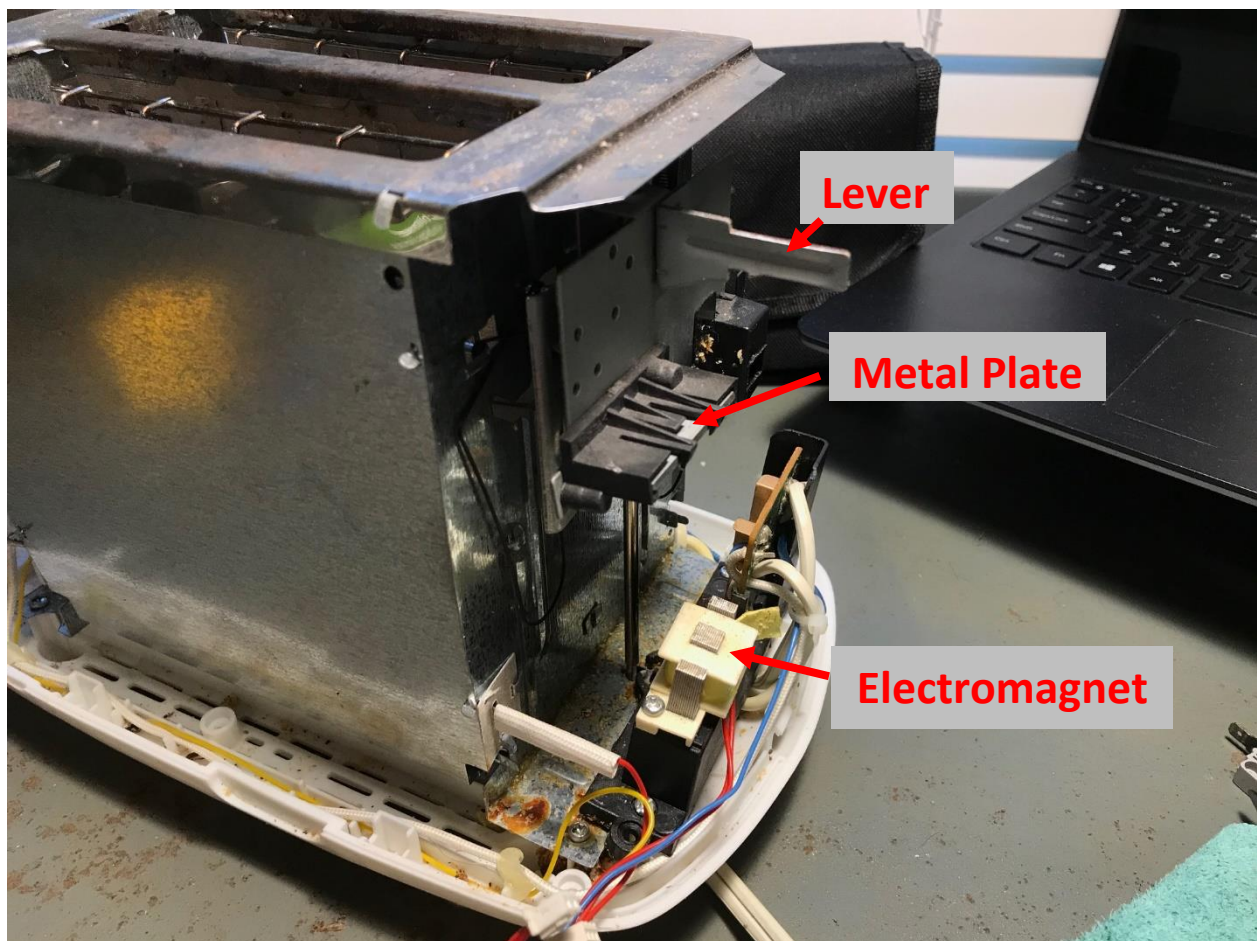
Charlottesville Repair Café

Toaster Repair

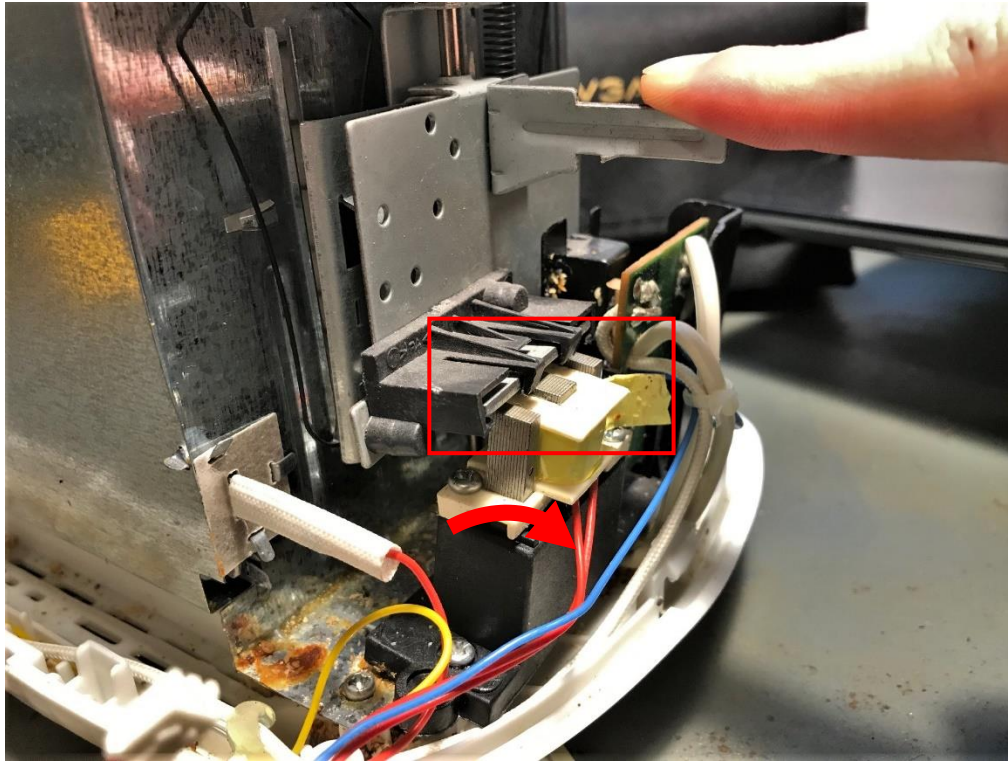
2020/07/13

In most, if not all toasters, you press down on a lever, which is attached to a steel plate. As the plate descends, it gets 'captured' by an electromagnet, and completes a circuit that heats up the bread. The electromagnet holds on for as long as you define with the knob, and eventually turns off, releasing the lever and 'pushing' the bread up.

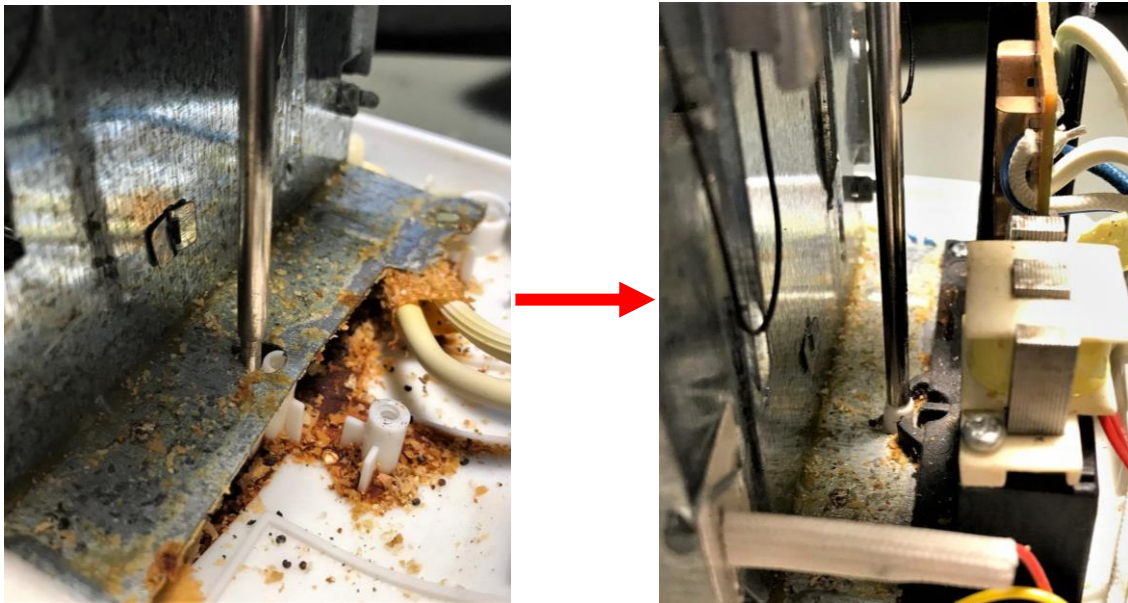
To date, every issue I've seen in toasters have boiled down to the steel plate not making good contact with the electromagnet.



In your case, the black platform that the electromagnet is mounted to was bent away from the main structure, pushing it out of alignment and preventing the plate from catching when the lever is pressed.



I removed this platform, and saw that over time, a screw had loosened, letting the lever guide pole become dislodged from its slot at the bottom of the casing. This was the cause of the misalignment. Slipping the pole back in the slot and retightening the screw was the fix.



With the pole now realigned, the plate now solidly connects with the electromagnet, and the lever remains down!

